

Kittitas County Community Development Services

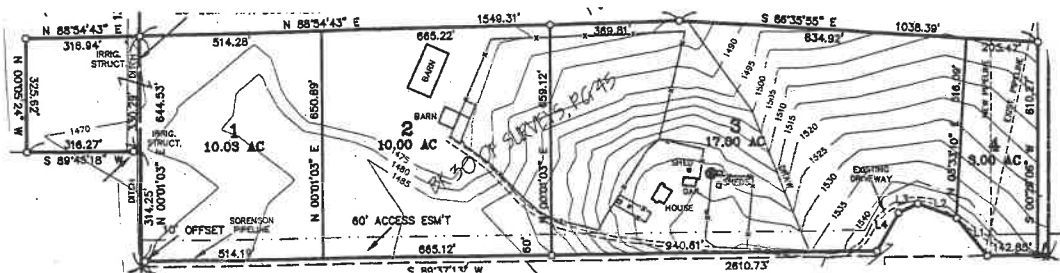
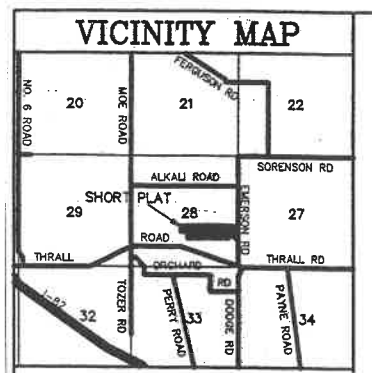
411 N. Ruby STE 2
FAX: (509) 962-7697

Ellensburg, WA 98926
(509) 962-7506

NOTICE Shor Short Plat (SP-04 -14)

Notice is hereby given that on June 17th, 2004 conditional preliminary approval has been given to Marc Shor for short subdivision of 40.03 acres into 4 lots consisting 3, 17, 10 and 10.03 acres respectively. Location: West of Emerson Road, South of Alkali Road, and North of Thrall Road, Ellensburg WA. 98926, a portion of the SE and SW ¼ of Section 28, T17N., R19E., W.M. Tax parcel number(s) 17-19-28000-0044 and 17-19-28000-0049.

Said proposed division may be appealed to the Board of County Commissioners upon the request of any aggrieved party within 10 working days. The appeal deadline is July 6th, 2004 at 5:00p.m. Comments must also be submitted by July 6th, 2004 by 5:00 p.m.



Original short plats and related information may be examined during the business hours at the Kittitas County Community Development Services Department 411 N. Ruby Suite 2 Ellensburg, WA 98926

You may appeal this determination pursuant to KCC 15A.07.010 by submitting specific factual objections and a fee of \$200 to the Kittitas County Board of Commissioners (205 W. 5th, Room 108) by July 6th, 2004 at 5:00p.m.